

- Page 1 Light Bond™, Go To®, Pad Lock®
- Page 2 LCR Light Cure™ Retainer, Band-Lok®, Ultra Band-Lok®,
- Page 3 Flow Tain™, Pro Seal®, L.E.D. Pro Seal®, Assure® Sealant, Assure® Plus
- Page 4 Ortho FlexTech®, Sponge Pellets, Mixing Pads, Mixing Spatulas, Porcelain Conditioner
- Page 5 Metal Primer, Plastic Conditioner, Blue Gel Etch Syringe, Gel Etch 9 gm, Liquid Etch 9 gm, Liquid Etch 23 gm
- Page 6 Green Etch Syringe, Porc-Etch™ w/Barrier Gel, 1st and Final, Bond A Braid®, Renew Metal Burs and Finishing Points
- Page 7 T.K.O. Composite Bite Turbo Gel Pink, Microbrushes®, Long Primer Brushes, Carpule (Tips) Dispensing Gun
- Page 8 Mini Mold™ Kits, Access Cheek Retractor





Light Bond™

Highly filled material with fluoride. Maximum strength. Small filler particles promote ease of removal from enamel.

Separate Components:

	ITEM #
5 gm Light Bond Paste in Syringe Medium viscosity*	LBMPFF
5 gm Light Bond Paste in Tips Medium viscosity*	LBMPTF
5 gm. Light Bond Paste in Syringe	LBPPF
5 gm. Light Bond Paste in Tips	LBPTF
3 cc. Light Bond Sealant	LBS3F
3 cc. Light Bond Filled Sealant	LBFSF
7 cc. Light Bond Sealant	LBFS7F
7 cc. Light Bond Filled Sealant	LBFS7F

*a customer preferred product



GoTo®

Light Cure adhesive for brackets and creating attachments for thermoplastic aligners.

No bracket drift and any flash removed in one piece.

[Will fluoresce under UV light.](#)

	ITEM #
4 gm. GoTo Syringe	GTP
4 gm. GoTo Tips	GTT



Pad Lock®

Bonds chemically and mechanically to metal bases of all types for increased strength.

[Will fluoresce under UV light.](#)

	ITEM #
4.5 gm. Syringe w/fluoride	PLPF
4.5 gm. Syringe w/fluoride, thin viscosity	PLTP



Reliance Adhesives & Accessories



LCR Light Cure™ Retainer

Designed specifically for bonded lingual retainers: pad or wire types and occlusal build up on posterior teeth.

	ITEM #
Push Syringe 5 gm LCR Syringe	LCR
Pre-loaded Syringe Tips 5 gm LCR Tips	LCRT5



Band-Lok® with Paste in Screw Syringe

Band-Lok does not have an aftertaste or odor.

Bonds chemically to metal bands and crowns. Removal all in one piece with cement on the appliance.

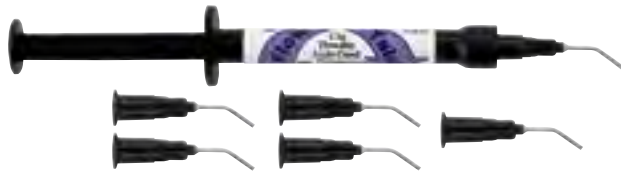
	ITEM #
6 gm. Band-Lok Paste A in Screw Syringe	BLSA
6 gm. Band-Lok Paste B in Screw Syringe	BLSB
6 gm. Band-Lok Paste A in Screw Syringe Blue	BLSAB



Ultra Band-Lok® with Paste in Push Syringe

Light Bond activated so no working constraints or waste from mixing. Chemically bonds to stainless steel.

	ITEM #
5 gm. Ultra Band-Lok Syringe	UBLPP
5 gm. Ultra Band-Lok Syringe Blue	UBLBPP



Flow Tain™ with Tips

Flow Tain™ light cured composites with a low modulus of elasticity – ideal for lingual retainers, splinting materials and indirect bonding of brackets. This material is highly polishable which will reduce wear.

Flowable Viscosity with thixotropic properties to prevent them from slumping for better control.

Needle Tip Dispenser

Cured Composite Flexibility Flow Tain™ has a low modulus of elasticity and is not as stiff or brittle as conventional composites.

Will fluoresce under UV light.

1 syringe with tips/Pkg.

ITEM #
FT



Pro Seal® L.E.D. Pro Seal

Light cure fluorescing filled sealant completely sets without any oxygen inhibited layer.

	ITEM #
1- 6 ml. bottle	PRO
1- 6 ml. bottle	LEDPRO



Assure® Sealant

Assure Sealant protects the enamel while bonding to normal, atypical, dry, or slightly contaminated enamel.

	ITEM #
1- 6 ml. bottle	AS



Assure® Plus

All surface bonding resin performs as Assure (AS) plus porcelain, zirconia, and acrylic temporary/pontic teeth can be bonded.

	ITEM #
1- 6 ml. bottle	PLUS



Reliance Adhesives & Accessories



Ortho FlexTech® Dental Retention System *The Next Generation in Lingual Retention*

- Easy application – naturally forms to lingual arch curvature
- Low failure rate due to “flex linkage”
- Improved patient comfort – lays flat against the teeth
- 14 karat gold composition

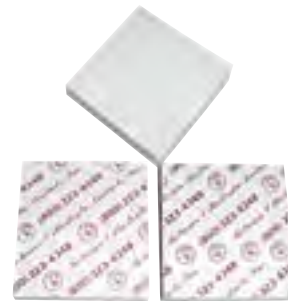
	ITEM #
1 - 30” Spool/Pkg.	OFT2
Stainless Steel Ortho FlexTech®	SSOFT
1 - 30” Spool/Pkg.	



Sponge Pellets

500/Pkg.

ITEM #
SP



Mixing Pads

Non Absorbent
1/Pkg.

ITEM #
1PADS



Nylon Mixing Spatulas

Reusable
50/Pkg.

ITEM #
S



Porcelain Conditioner

For Bonding to Ceramic Crowns

8 cc.

ITEM #
PO



Metal Primer

For Bonding to Gold, Stainless Steel and Amalgam

8 ml.

ITEM #
ME



Plastic Conditioner

For Bonding to Composite Restorations, or Acrylic Appliances

10 cc.

ITEM #
PL



Blue Gel Etchant in Syringe

High visibility, high viscosity blue gel enamel etchant, with anti-microbial to prevent bacteria buildup after etching

ITEM #

Etchant in one syringe 5 gm and one pkg. of tips

BEGS



Etchant – Gel

9 gm.

ITEM #
EG9



Etchant – Liquid

9 gm.

ITEM #
EL9



Economy Etchant Liquid

23 gm.

ITEM #
EL24



Reliance Adhesives & Accessories



Green Gel Etchant in Syringe

Etchant in one syringe
6.5 gm. and two pkgs. of
tips

ITEM #
EGSS



Porc-Etch™

Porcelain Etching Agent
with Barrier Gel

9 gm. etch **ITEM #**
POE



1st & Final

Prepackaged Orthodontic Pumice

200/Pkg. **ITEM #**
FF



Bond-A-Braid® Hilgers

Lingual Retainer Wire
Permanent retention is greatly
enhanced using a flattened, dead
soft 8-braid wire.

10/Pkg. **ITEM #**
BAB2

Renew® System Burs

- | | |
|---|------------------------------|
| Renew Bur 118S | ITEM #
RSB |
|  | |
| Renew Bur 118L | ITEM #
RSBL |
|  | |
| Renew Finish RS, Friction Grip | ITEM #
RSPFG-12pkg |
|  | |

- | | |
|--|-----------------------------|
| Tapered 218 | ITEM #
RSB2 |
|  | |
| Renew Finish, Latch Grip | ITEM #
RSPL-12pkg |
|  | |



T.K.O. - Composite Bite Turbo Gel Pink

Looking for a Triad substitute? Reliance is excited to introduce T.K.O.!

- Quick light cure acrylic repair
- Gentle impact Resin Matrix (great for occlusal build ups)
- Needle tip dispensing for accurate and ergonomic placement
- Will not wear opposing tooth structure. Relatively easy to remove at the end of treatment
- Used in both lab and chairside settings
- Pink shade to contrast enamel
- Contains one 3.4g TKOP syringe with 5 tips

ITEM #
1 TKOP



Microbrushes®

4/Pkg.

ITEM #
400-MB



Primer Brushes, Long 4"

To reach posterior sections – can be angled. (Taiwan)
100/Pkg.

ITEM
400-LB



Carpule Dispensing Gun

Accepts Reliance and most carpules.
Carpules lock in place – no rotation while dispensing adhesive. Autoclavable to 275°F. (Taiwan)

ITEM #
CDG



Reliance Adhesives & Accessories

Mini Mold Kits

Fabricate needed accessories by attaching the flexible mold to the handle, filling the mold with Light Bond Adhesive, and curing on the prepared tooth.



Habit Corrector
10/Pkg.
ITEM # 702



Anterior Bite Ramp 3 mm
8/Pkg.
ITEM # 703-3



Anterior Bite Ramp 5 mm
8/Pkg.
ITEM # 703-5
ITEM # 703-7
Bite Ramp 7 mm
Not shown 8/Pkg.



Button Bonder
10/Pkg.
ITEM # 704



Posterior Bite Bumper
10/Pkg.
ITEM # 706



Bracket Bonder
10/Pkg.
ITEM # 707



Wire Bonder Small – Lower Cen./Lat.
10/Pkg.
ITEM # 708-S



Wire Bonder Large – Cuspids
10/Pkg.
ITEM # 708-L

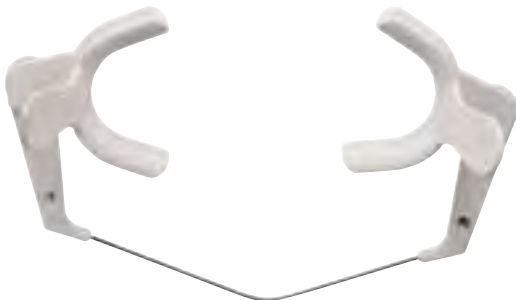


Tube Bonder
10/Pkg.
ITEM # 709



Cuspid Bite Ramp
8/Pkg.
ITEM # 710

ITEM # 705 Mini mold handle only (not shown) 1/Pkg.



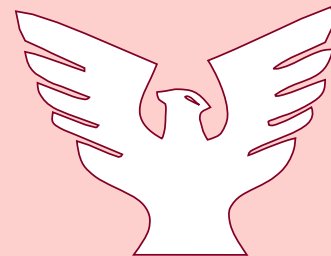
Access Cheek Retractor

Sterilize to 370° F – 1/Pkg.

	ITEM #
Adult	CH1
Child	CH2

*Thank you for using
Phoenix products*

Visit our website at
phoenixorthodonticsgeorgia.com



PHOENIX
ORTHODONTICS