

# INSTRUMENTS



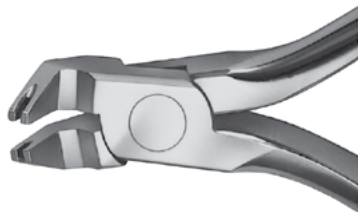
Page 1 Introduction, Warranty, Sterilization Recommendations

Page 2 Distal, Ligature, and Hard Wire Cutters, Bird Beak and Tweed

Page 3 Three Prong, Band Remover, Arch Contouring, Angled Weingardt, Angled and Straight Bracket Remover, "V" Stop Plier for NiTi, NiTi Distal Bending



Page 4 Adhesive Removing and Separating Pliers, Mathieu Premium, Bracket Holders, Reverse Action Bracket Holder, Angled Hook Crimping Pliers



Page 5 Cap Removing Plier, HD Explorer for Elastics Removing and SLB Opening, Coon Ligature Plier, Boone Gauge



Page 6 Bracket Holder, Bondable Tube Holders, Pusher/Scaler



Wire cutting, forming, and handling instruments are sourced from the highest quality American, German, and Japanese manufacturers.



All inserts on cutters and wire forming instruments are a proven anti-corrosive molybdenum, chrome vanadium material for long life.

Following each individual instrument description will be the country of origin. When "Phoenix" is stated, product is manufactured in USA.

Warranty – Lifetime on any failed insert that separates from the forging. One year on repair or replacement of any fractured insert.



- **Follow recommendations on capacities.**
- **Use of an ultrasonic cleaning solution with lubricant and corrosion inhibitors is required.**
- **For longer instrument life:**
  1. **Always sterilize mathieus and hemostats in the open and unlocked position.**
  2. **Cutting tips should be racked and held open while in ultrasonics to prevent rapid dulling.**





**Distal End Cutter**

Small pattern for easy access  
Shear cut with hold  
Capacity 012-020-022x028  
ITEM # OE-318



**Ligature Cutter**

Small pattern for easy access  
Capacity 010-014 soft wire only  
ITEM # OE-304



**Angled Ligature Cutter  
15°**

Capacity 010-014 soft wire only  
ITEM # OE-311



**Flush Cut Distal End Cutter**

Cuts flush to distal of tube and holds wire. New smaller pattern and longer handles for better access.  
Capacity 012-020-022x028  
ITEM # 1016F



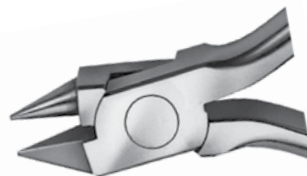
**Hard Wire Cutter**

Capacity 014-020-022x028  
ITEM # OE-310



**Bird Beak Standard**

Capacity 020-032-022x028  
ITEM # OE-330



**Bird Beak for Intricate  
Bends and Full Control**

Capacity .030  
ITEM # 60-314 Japan



**Arch Bending, Tweed**

.043 wide beaks are parallel at .020 opening  
Arch wire Capacity 022x028  
ITEM # 60-303 Japan

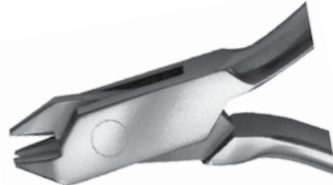


## Three Prong Standard

For detailing in the vertical and horizontal planes of ProForce nickel titanium.

Capacity .028

ITEM # 60-313 Japan



## Three Prong Large

Capacity .036

ITEM # 60-313L Japan



## Posterior Band Remover Long

ITEM # OE-354

ITEM # OE-942 tips (6)

Autoclavable 250°F



## Arch Contouring

Inserted tips form shapes smoothly.

ITEM # PH203 Phoenix



## Weingardt Angled Slip Tips for Best Access

ITEM # OE-814



## Angled Bracket Remover

ITEM # OE-353



## “V” Stop Plier for NiTi

Capacity 012-020-021x025

ITEM # OE-349



## NiTi Distal Bender

ITEM # 60-900



## Straight Bracket Remover

ITEM # OE-352



**Adhesive Remover**

ITEM # OE-933

ITEM # OE-1002 Steel tip (1)

ITEM # OE-942 tips (6)

Autoclavable 250°F



**Separating Plier  
with Parallel Safe Tips**

ITEM # OE-953



**Mathieu Premium**

With offset ratchet to not  
catch gloves.

ITEM # PH-815



**Angled Hook Crimping  
Plier**

Four prong design securely holds/  
crimps hooks and stops on four sides.

ITEM # 60-446 Japan



**Reverse Action  
Bracket Holder**

ITEM # OE-921



**Reverse Action  
Bracket Holder With  
Bracket Height  
Gauge (MM)**

ITEM # OE-925-BG



## Cap Removing Instrument

Convertible buccal tube (including bondable tubes) caps removed easily and comfortably. Will not debond tubes. Cold sterilize or 270°F.

Item # 60-105 Japan

Item # 60-960 Replacement Tips 5/Pkg. Japan

Item # 60-961 Hex Wrench



## Heavy Duty Explorer

Tip does not flex when removing ligature modules or chains. Very useful for opening "doors" on self-ligating brackets, including our Embrace SLR.

Item # PH S/E 1



## Coon Ligature Plier

ITEM # OE-791



## Boone Bracket Height Gauge

ITEM # 1346



# Phoenix Instruments



## Bracket/Tube Placing Instrument

ITEM # 20-009



## Bondable Tube Holder

ITEM # OE-1343



## Reverse Action Bondable Tube Holder

ITEM # OE-1344



## Pusher/Scaler

Stainless CE-USA

ITEM # PH-PSC

*Thank you for using  
Phoenix products*

Visit our website at  
[phoenixorthodonticsgeorgia.com](http://phoenixorthodonticsgeorgia.com)



**PHOENIX**  
ORTHODONTICS